

## Metal Additive Manufacturing Machine

# BLT-A400



ISO9001:2015 / ISO14001:2015 / ISO45001:2018

### Realizing the Batch Production of Industrial Parts

Multiple Optics  
Configurations

Stable Full-substrate  
Printing

High-quality  
Batch Production

Large-size Building  
Technology

Low Consumption  
and High Efficiency



**Multiple Lasers are Optional  
Two-way Intelligent  
Powder Feeding**  
Efficiency increases  
dramatically



**Long-life Filtration System**  
Safety & Longevity  
double guarantee



**Powder-worker Separated  
in the Whole Process**  
Strengthen occupational  
health protection



**Automatic Grafting  
Upgraded Available**  
Full substrate  
efficient processing  
guarantee high precision



**Powder Circulation  
System**  
Automatic powder adding & recycling  
Multiple configuration solution  
Uninterrupted production

Supporting Materials	Titanium Alloy, Aluminum Alloy, Superalloy, Stainless Steel, High-strength Steel, Tool Steel
Build Dimension <sup>(1)</sup>	400mm×300mm×400mm (W × D × H)
Laser Power	500W×2; 500W×3; 500W×5
Wave Length	1060nm-1080nm
Layer Thickness	20μm~100μm
Maximum Scanning Speed	7m/s
Building Speed <sup>(2)</sup>	50cm <sup>3</sup> /h; 75cm <sup>3</sup> /h; 125cm <sup>3</sup> /h
Preheating Temperature	RT +20°C~200°C
Beam Quality	M <sup>2</sup> <1.1
Optics System	F-theta Lens
Recoating	Single/Double-direction
Minimum Oxygen Content	≤100ppm
Gas Requirement	Ar/N <sub>2</sub>
Power Requirement	≤11kW; ≤14kW; ≤17kW
Supply Voltage	AC380V 3Ph/N/PE
Machine Dimension <sup>(3)</sup>	4200mm×1200mm×2200mm (W × D × H) Height of Tri-color Indicator: Approx.380mm
Machine Weight	Approx. 3200kg
Software	Magics; BLT-BP; BLT-MCS



 **LinkedIn**  
Bright Laser Technologies-BLT

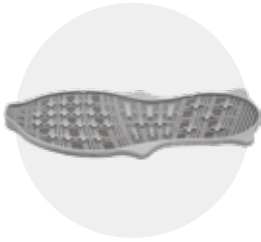
 **YouTube**  
Bright Laser Technologies

 **TikTok**  
@brightlaser.technologies

Citations: (1)Excluding substrate thickness. (2)Dependent on part geometry, material and parameter set used.

(3)The dimension does not include the height of tri-color indicator and the height is remarked separately. The dimension is only theoretical, the actual data is affected by the configuration, subject to the installation.

## ➤ BLT-A400 APPLICATIONS



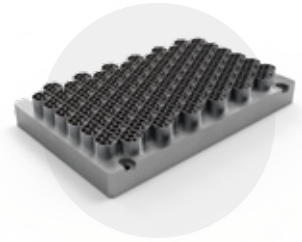
Shoes Mold



EVA Shoe Mold



Tire Mold



Full Substrate Swirler

## ➤ BLT-A400 INTELLIGENT MODULES

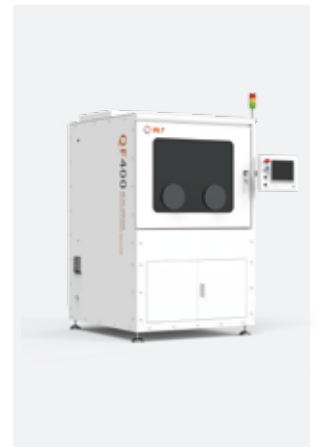
### Standard Functions

Diagnosis Fault-grading/Real-time Status Monitoring/Process Data Traceability

### Optional Functions

Automatic Grafting Module/Powder Spreading Quality Control/BLT-MES System

## ➤ BLT-A400 AUTOMATION SOLUTIONS

Powder Sieving Machine  
BLT-SF400Powder Collection Machine  
BLT-WL200Powder Adding Machine  
BLT-GF500Depowdering Machine  
BLT-QF400

## ➤ BLT-A400 CONSUMABLES AND POWDERS

### Consumable

Scraper/Substrate

### Powder

Titanium Alloy/Aluminum Alloy/Superalloy/Stainless Steel/  
High-strength Steel/Tool Steel