

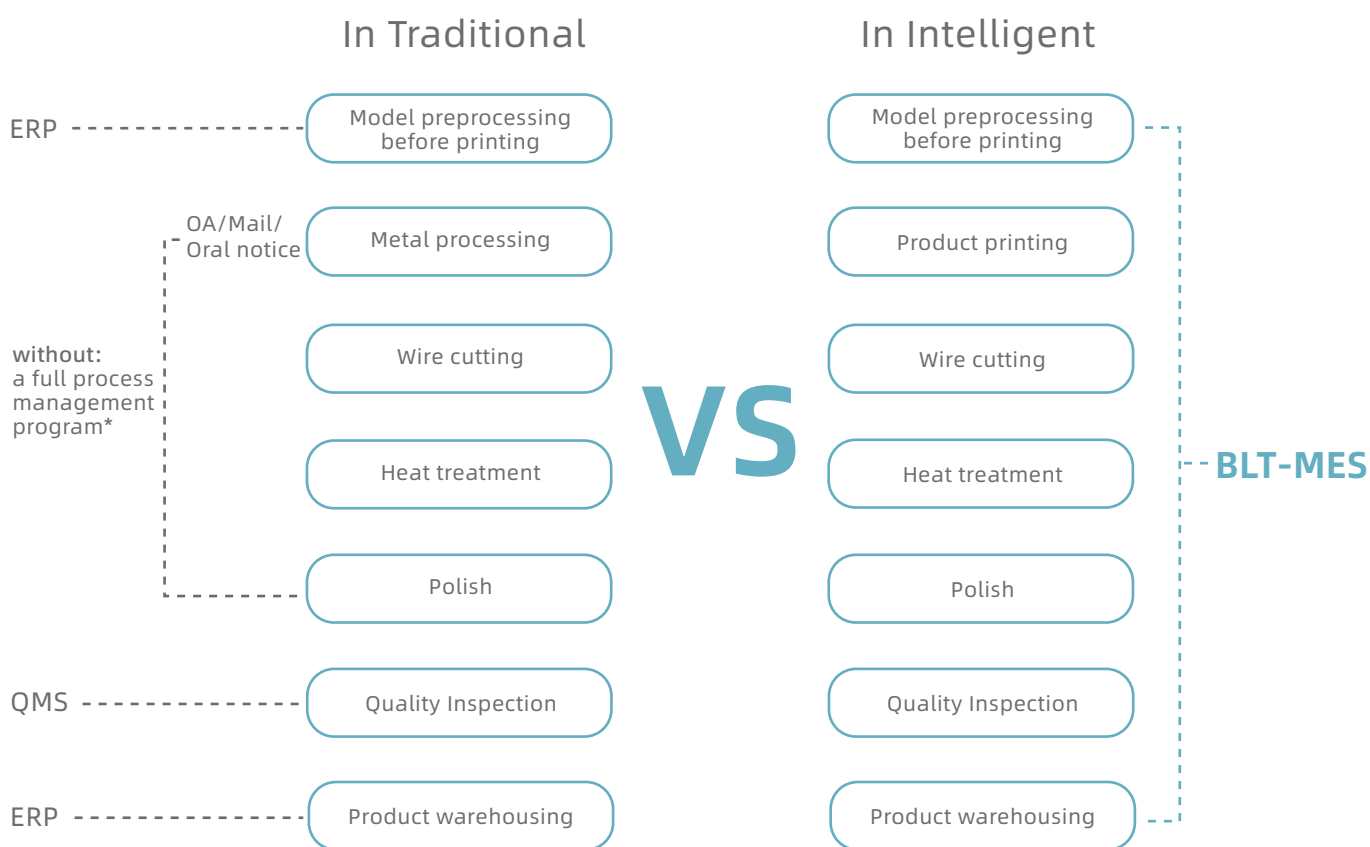
## Additive Manufacturing Intelligent Production Line Management Software

# BLT-MES

BLT's "Full-process highly independent additive manufacturing big data in-depth application project"

**Awarded "Industrial Internet + Big Data Pilot Demonstration Project" by MIIT**

Experience in managing more than 400 SLM Machines & Systems | Full process management software | Suitable for more than 10 units



### Reliable

Great experience  
Numerous print hours



### Multi-Scene Applications

Adapt to actual working conditions in various industrial scenarios



### Haute Couture

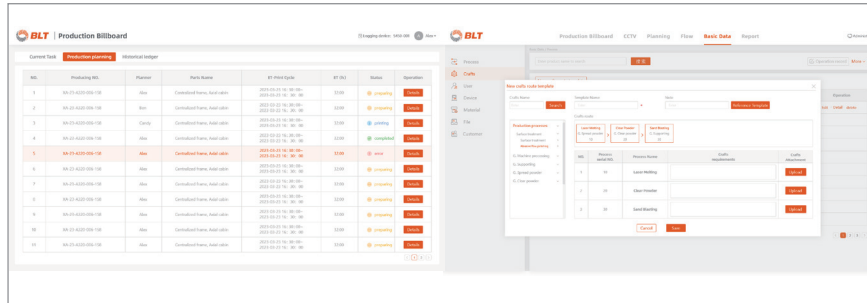
Highly customized  
Base on actual working conditions and scenarios



### Compatibility

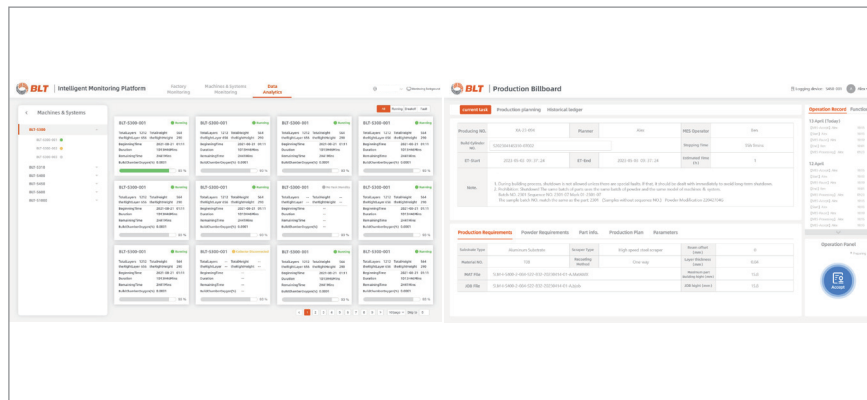
Compatible with third-party software  
Can be deployed on LAN

## BLT-MES Advantages



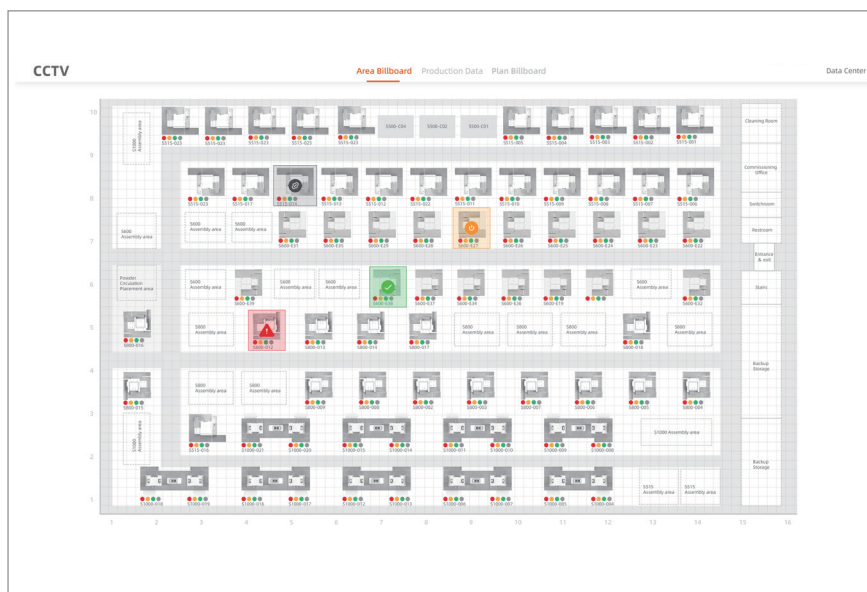
### Preprocessing Stage

- Production Plan
- Intelligent Production Scheduling
- Customized Process Route
- Cross-process Data Traceability



### Printing Stage

- FULL-RTA of Printing Process
- FULL-RTA of Parts Flow Process



### Data Reading

#### Device details data collection

- Live photos
- Real-time hardware parameters
- Alarm information
- Printing parameters

#### Device Layout

- Overall utilization
- Device power-on rate
- Running status distribution
- Machines & Systems failure pause

#### Data Query\*

- Traceable historical data

#### Online Video\*

- FULL-RTA of Build Chamber data